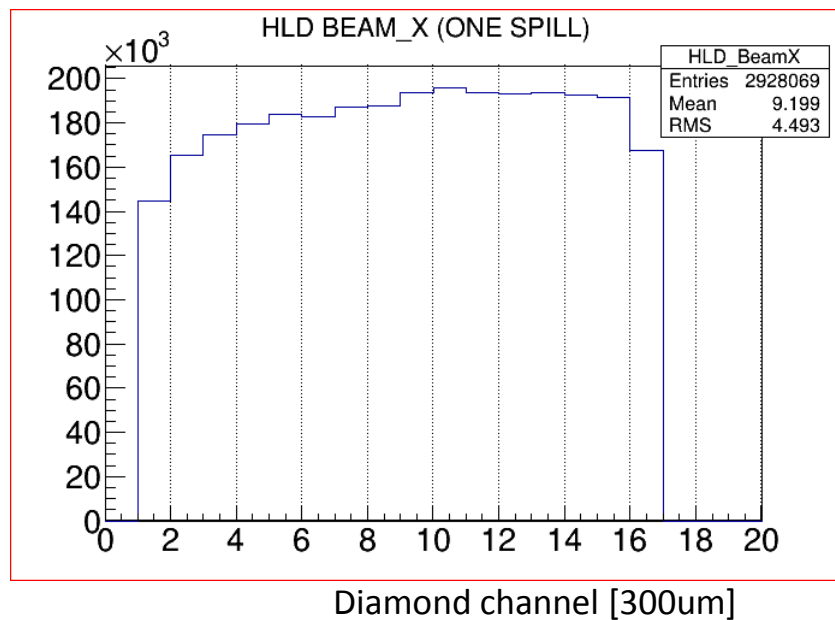
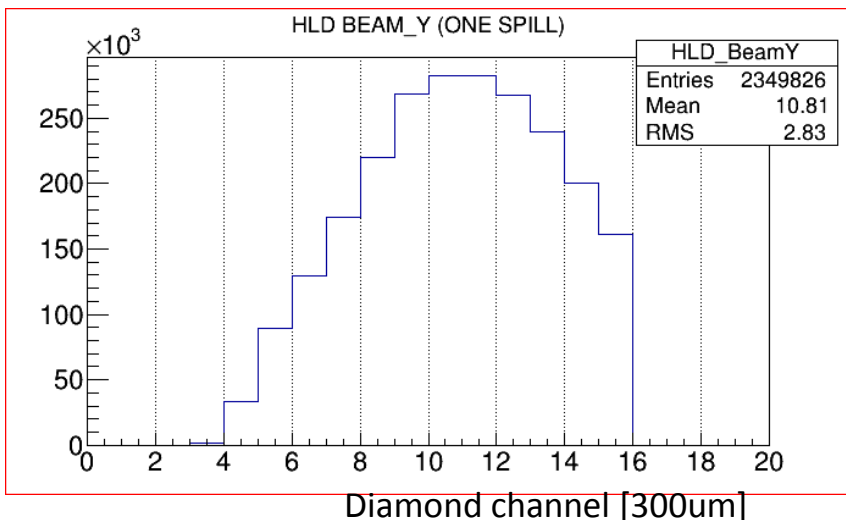
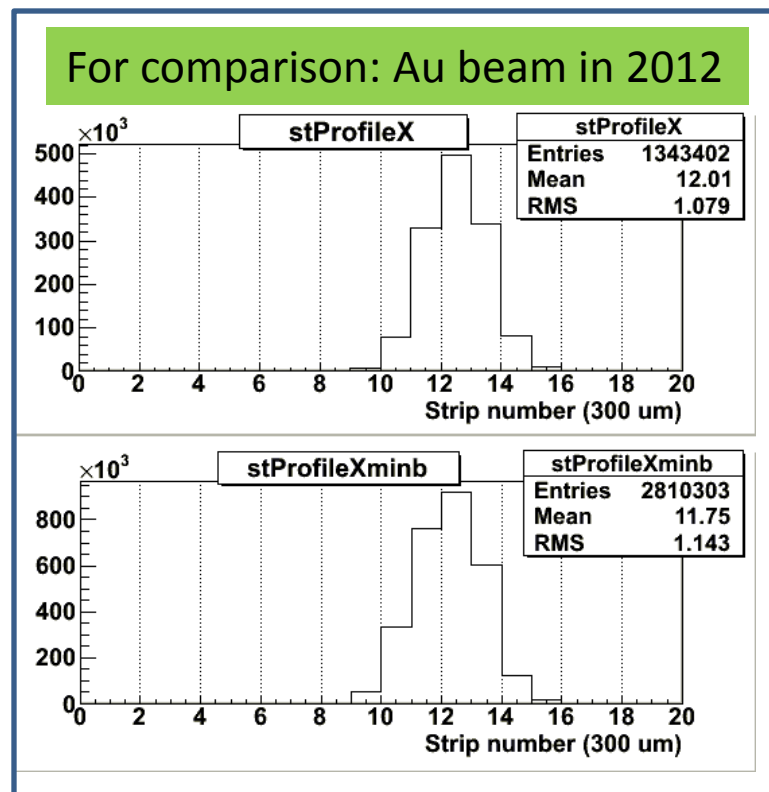


Ar beam, day 21.11.2018, time: 22:00, HADES cave

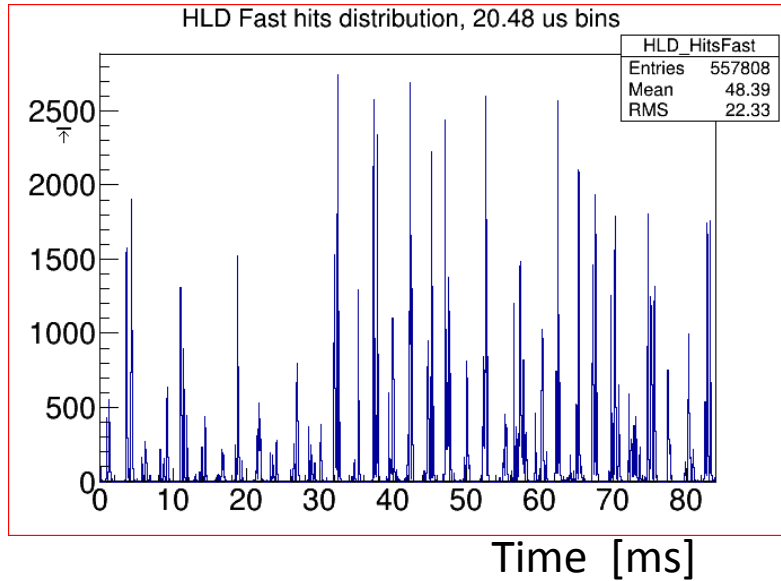


Beam focus on HADES diamond:

- beam intensity on diamond:
- 3×10^6 Ar ions/s
- Visible focus in Y direction

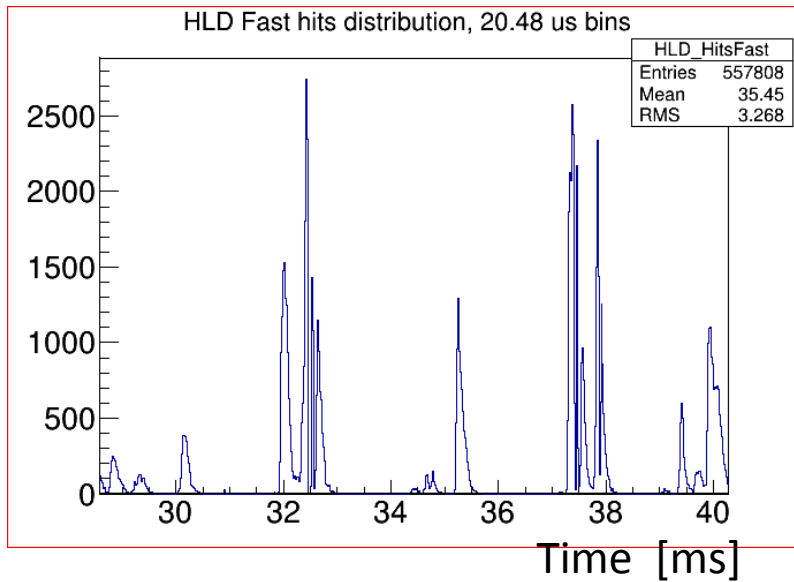


Ar beam, day 21.11.2018, time: 22:00, HADES cave



micro Spill structure:

- binning – 20us
- time scale: ms

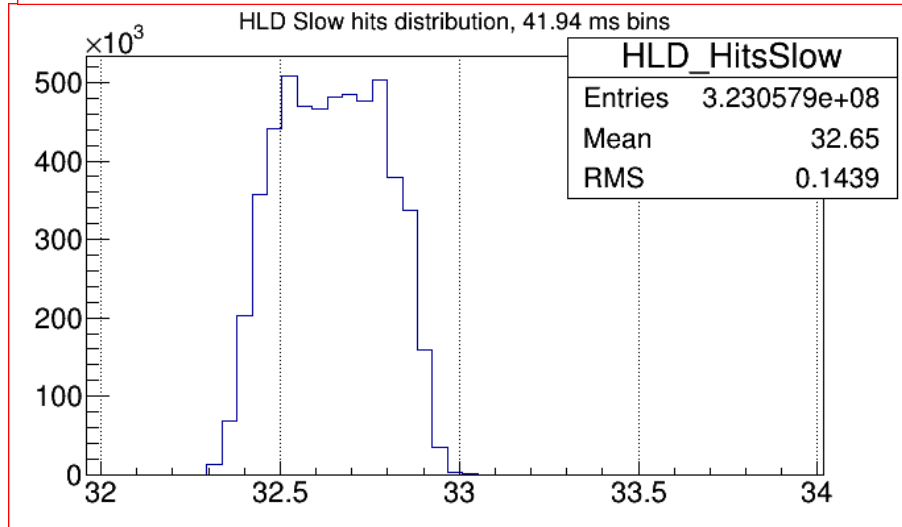


Zoomed micro Spill structure

Ar beam, day 21.11.2018, time: 22:00, HADES cave



Quality factor:
 $N_{\max}(20\mu\text{s})/N_{\text{mean}}(40\text{ms})$
- about 12 in spill



Spill profile, binning 41ms

Time [s]